

teknion design days 2024

the ways we work
better today
than yesterday



con ten ts

introduction

settings

lwum



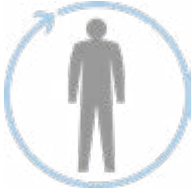
the ways we work: better today than yesterday

The past four years have taught us the importance of the office; and that yes - it is worth the commute. But the question becomes how can this space be better? How can it elevate the experience, and foster deeper connections between colleagues and to the company itself?

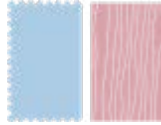


How does it evolve to be a true supporting player in our lives - one that anticipates our changing rituals of work, and offers variety and comfort while supporting the more advanced and technical tasks that we expect to accomplish?

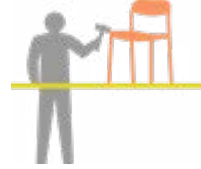
tenets



HUMAN-CENTERED
Design makes connecting with each other a priority. Emphasis is on people-centric access, **prioritizing interpersonal connections over mere access to information.**



MATERIALS MATTER
Diversity in materials is evident, maintaining contract durability yet incorporating richness through textured finishes. The time spent in the space is **enhanced by tactile touchpoints that are elevated through visually engaging colors and patterns.**



CRAFTED
Craft leads the move away from a factory aesthetic, embracing a local and custom feel. **Furniture not systems.**



ECLECTIC
Eclectic design choices have replaced standard topographies, **introducing a personality of variety and interest in the workplace.**



EXPRESSIVE
Distinct work cultures are shown through color, texture, and pattern. Settings with less curated uniformity, allow for the **diverse expression of culture and work styles.**



IMMERSIVE TECH
Purposeful integration of technology offers a more immersive experience marked by larger visuals, improved sound, and tailored for group settings. Technology is used to **enhance the senses, not replace them.**



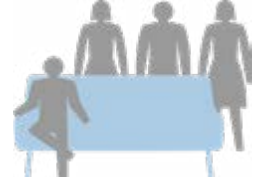
HOSPITALITY

Integration of key features as focal points of social and professional interactions brings about a more collegial culture. Understanding the value of a welcoming moment and experience that **provides a sense of calm and place.**



DYNAMIC

Active design strategies promote agile workstyles and a **high-energy atmosphere.** The constant movement allows for changing workstyles throughout the day.



PERSONAL

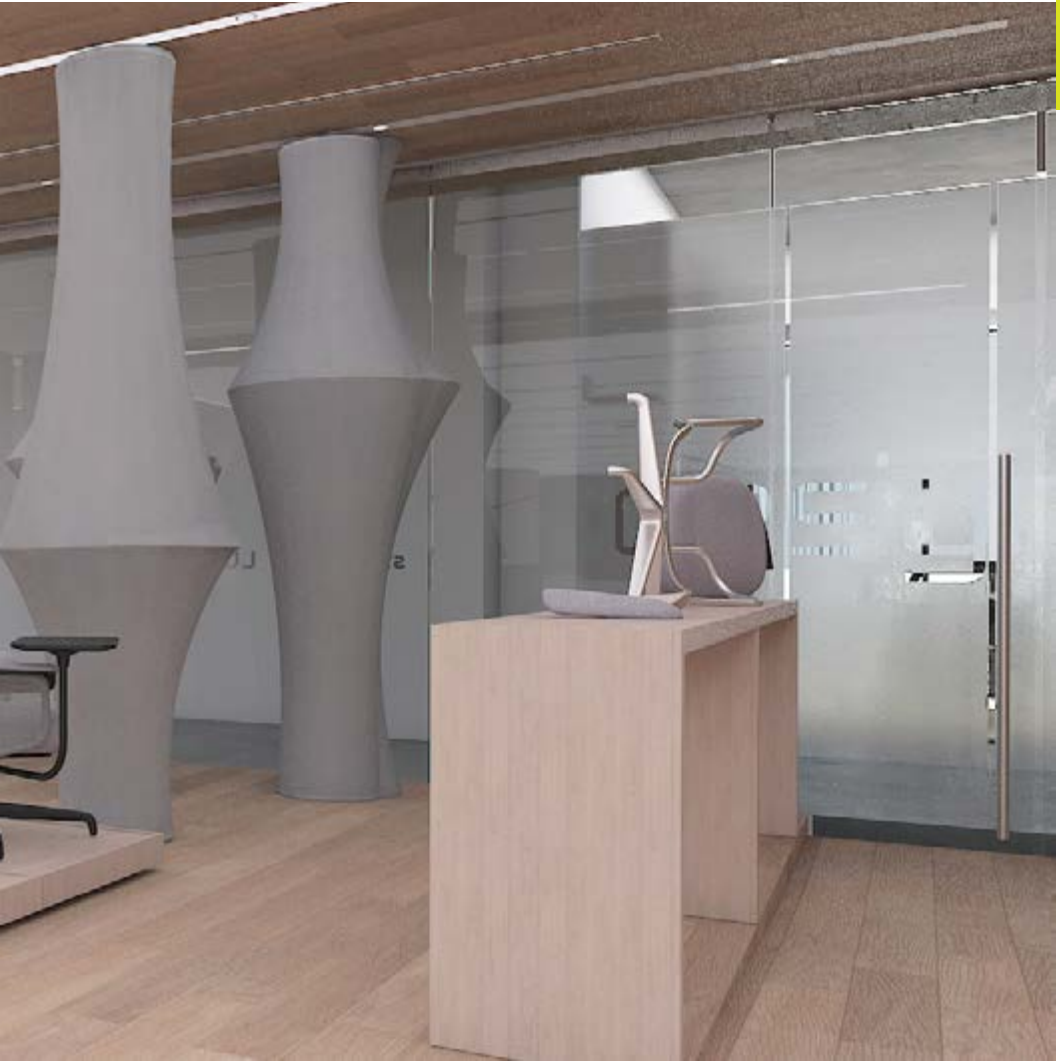
The office is **collectively owned yet tailored** to the unique needs of each occupant. A broad range of seating choices encourages movement and healthier postures.



aarea chair display

The deconstructed table display shows the minimal components of the Aarea chair's environmentally sustainable design.

The 3D sculptures were developed to illustrate the concept of the Aarea chair designed by Pearson Lloyd: with a minimal structure, the fabric creates the form. The sculptures are created from the same sustainable



mesh fabric to produce the Aarea chair. Aarea's mélange mesh back is knitted using retrieved ocean litter to minimize virgin materials and waste. The flexible 3D knit readily conforms to the shape of the body, creating seamless support through the tensions inherent in the knit. Using a minimum of components and materials, Aarea has a cleverly sophisticated second life as a chair.

what's new

aarea chair



Aarea provides a welcoming and familiar structure; ergonomic and adjustable yet still cozy and inclusive. Ingenious in material selection and construction, Aarea is a product with few components, yet each has invisible intelligence behind it. The first impression is hospitality, while the experience is of intuitive performance.

loria seating



Loria is a versatile seating collection defined by a simple, sculptural shell offered in a refined palette that speaks to a modern sense of quiet luxury. Designed with careful attention to form, function and detail, Loria adapts readily to work-café, meeting rooms and casual collaborative spaces, enhancing every space with its stylish polish and presence.

personal assistant



The Personal Assistant provides space division and personal storage for bags, plus a ledge worksurface for small items and beverages. Also had options for electrics.

cosi laptop table



Intuitive and easy to use, the Cosi Laptop Table features a casual worksurface that accommodates a variety of users and provides a full range of adjustability. Cosi was designed to be aesthetically neutral, and beautifully suites with items across different portfolios.

what's new

freestanding fabric shade screen



The Freestanding Fabric Shade Screen provides casual space division across the floorplate. It has a calm neutral character that blends easily with other products.

district open frame sliding screen



Our innovation new add-on is designed to seamlessly integrate with 29" high District/Powerspine panels. The open frame allows for easy user adjustment, in heights of 51" or 57", providing the perfect balance between openness and seclusion. Available in fabric or smooth felt to suit your aesthetic preference and functional needs. Transform your workplace into a haven of productivity and comfort.

open space bookshelf



Meet the Open Space Bookshelf, a dual-purpose dynamo that elegantly displays your items and defines different areas in an office environment. This multifunctional piece blends seamless utility with open-concept design to organize and transform any workspace.

systems stacker



Explore the functional elegance of the System Stacker, designed to augment storage on credenzas and stages while seamlessly dividing workspaces. This clever piece elevates organization and privacy in any office layout.

what's new

accessories (planters, hooks desktop organizer)



Introducing our latest innovation in workspace organization and personalization! Elevate your office or workspace with our brand new line of planters, buckets, hooks, and organizers, available in a diverse range of sizes and customizable with or without perforations. Crafted in all our signature metal paint colors, these accessories are not only functional but also seamlessly integrate into your existing decor. What sets them apart is their versatility - designed to mount effortlessly to District/Power Spine panels, solid lateral screens, or simply placed atop any work surface.

lighting by koncept



Introducing a new family of lighting solutions for all areas of the office. Task, table and floor models from Koncept Lighting are available. Combining highly competitive specifications with a design forward aesthetic, these options will fit seamlessly within Teknion environments.

routes utility cart



Introducing the Routes Utility Cart, a compact mobile storage solution perfect for organizing small essentials with its added shelf and inclusive felt trays. Experience the simplicity of order with this new addition to our Routes collection.

expansion casegoods



Expansion Casegoods sets a new standard for integration of height-adjustability in private offices with a new signature desk, featuring a full-modesty panel with concealed mechanisms, and a new refined one-piece knife edge available at a competitive price point.

what's new

within



Transform your space with Within, adding privacy and functionality with dynamic Louvers and Baffles. Enhance acoustics with baffles, reducing sound reverberations in large open spaces. They also offer a practical solution for concealing ceiling utilities and visual clutter. The baffles create a lowered ceiling effect, providing the perception of a smaller, more cozy space with soft and natural textures.

studiotk braso



Designed by Khodi Feiz and offered through a partnership with Artifort in Schijndel, The Netherlands, Braso is perfect for various office settings thanks to its unique shape. Braso's distinctive armrests mimic the multangular positions of the human arm to create a more natural seating posture. Braso is available in a 2.5-seat sofa, a low-back armchair, and a high-back armchair. Two base options are available: a warm hardwood four-leg base or a steel base finished in StudioTK's Fundamental and Fashion powder paints.

studiotk suit



Offered through a partnership with Artifort located in Schijndel, The Netherlands, Suit chair's unique silhouette combines professional elegance with individual personality and brings a strong sense of style. Designed by Monica Forster, Suit is fully upholstered and contours the body to embrace the user like a tailor-made suit. The seat and back can be upholstered with complementary or contrasting textiles, allowing for a personalized identity. With an elegant open back, flowing lines, and smooth-rolling casters, this distinctive chair is a comfortable and inviting addition to hospitality, dining, and work environments.

what's new

studiotk shark



Offered through a partnership with Artifort in Schijndel, The Netherlands, Shark is an impressive chair designed by Rene Holten. Despite its name namesake's profile, Shark offers exceptional comfort and support with its sturdy design and wrap-around back support. The chair is perfect for a relaxed hospitality dining setting, guest seating, and informal meeting spaces. The seat, back, and arms are fully upholstered and can be paired with a steel four-leg or sled-style base. The base can be personalized and finished in any of StudioTK's Fundamental or Fashion metal finishes, making customization easy.

studiotk pala disc base



Offered partnership between Artifort in Schijndel, The Netherlands, the Pala Disk Base is the latest addition to the Pala lounge seating group. Designed by Luca Nichetto, this swiveling pedestal base features a sleek design and a welcoming appeal. It cradles the user and provides a place to relax, decompress, and take time for yourself. The base can be accented by any of StudioTK's Fundamental and Fashion powder paints for ultimate personalization. Pala is available in a complementary or contrasting inner and outer seat and back.

studiotk bevy mobile



Bevy Mobile tables, designed by Mario Ruiz for StudioTK, offer a solution for workplaces that need to change quickly and often. These tables are multipurpose and fluid, allowing for easy reconfiguration by one person. They encourage chance encounters that often lead to innovation, making them a great choice for agile offices. Bevy Mobile tables come in square, round, and rectangular shapes with warm hardwood legs. The tabletops are available in matching veneer or durable laminated surfaces, adding elegance and a custom touch to the workspace.

maluma



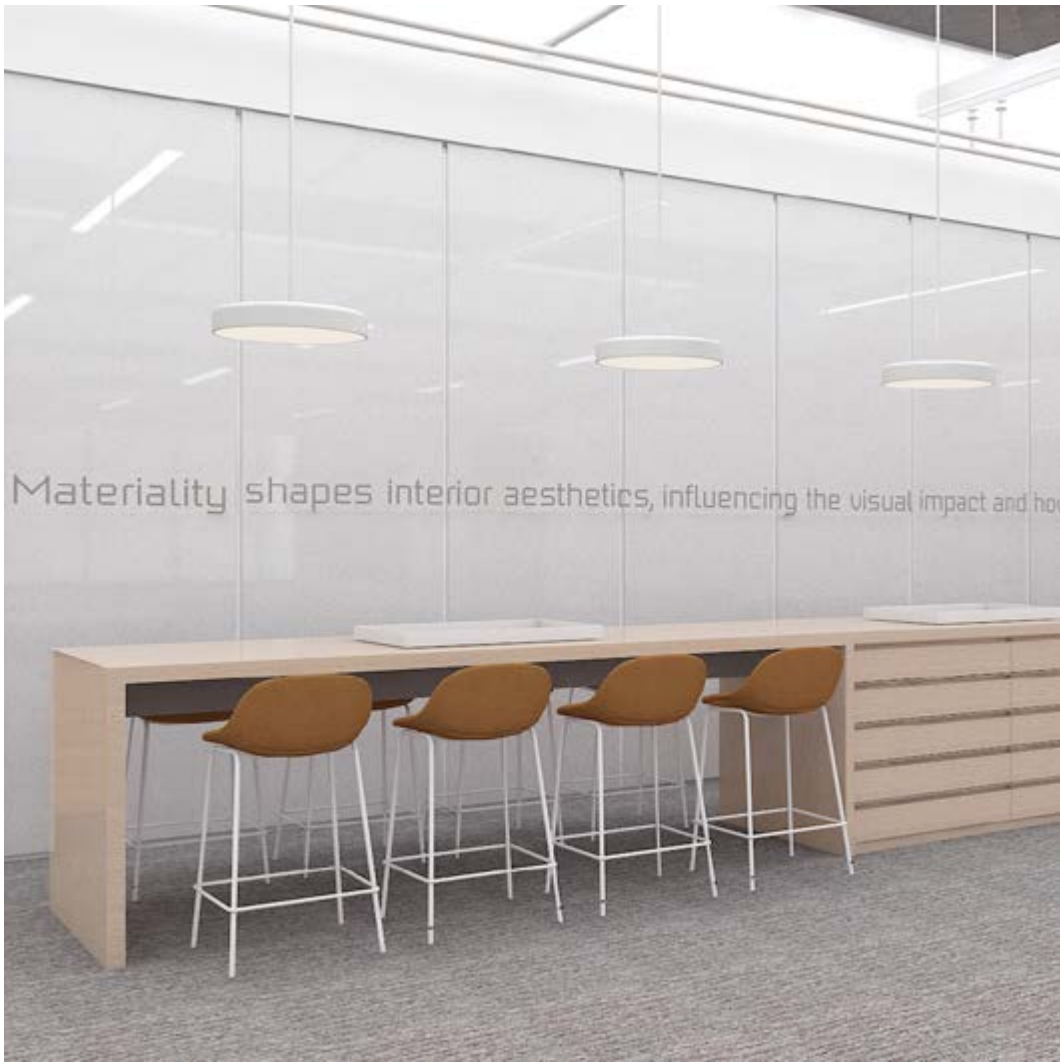
Offered through a partnership with Modus UK, the Maluma seating system, designed by Claesson Koivisto Rune, consists of individual chairs and ottomans that can be used separately or linked together to create straight lines, rings, arches, or long serpentine. Both the chair and ottoman can be customized with an optional tablet arm, and the steel base can be finished with StudioTK's Fundamental or Fashion powder paints. Maluma is designed for sustainability and is completely constructed without glue or staples.

bob



Bob is a unique and sustainable cork stool made entirely from recycled waste materials produced during the wine bottle cork manufacturing. It is designed with a holistic approach, ensuring that it can be mechanically recycled or composted back into the environment at the end of its life.

Designed by Michael Sodeau for Modus, Bob features a soft and curved base with a concave seat and iconic finger holes, making it easy to move. It is available in two finishes: natural or toasted dark. Bob adds a touch of personality and eco-friendliness to any environment, whether it is used alone or as part of a group.



what's new cmf update

“Materiality has the power to inspire, animate, and transform space.”

A dedicated area has been developed to focus on the importance of various materials in the new office. Materials interact with functions and emotions to make the office a more nurturing space.



Sculptures inspired by the iconic Be@rbrick figures used in various brand photoshoots are used to whimsically display the wide range of color finishes offered by Teknion. Trays are used to hold additional fabrics and finishes.



Teknion has over four decades of commitment to sustainability. We focus on those areas in which we have the greatest responsibility and opportunity to make a positive impact. They are also what matter most to our employees, customers and partners, and are influenced by their needs and objectives. As our learning expands, we examine, refine and evolve our approach to advance sustainability for everyone. With our recent accomplishments with SBTi and the acceptance of our Near Term Carbon commitment, we welcome you to our Chicago showroom and Design Days 2024.



Our showroom is 100% Green Renewable Energy, WELL Certified Platinum and LEED Certified Gold. The products, textiles, and product applications illustrate Teknion's efforts of designing for the environment (DfE), improving workplace wellbeing (DEI) and advocating for reduction in our carbon footprint (SBTi). As you experience the space and the attributes that support clean air, pristine water, low voc materials and healthy materials for human occupancy know that we remain committed to our vision.

teknion

www.teknion.com

IN CANADA:

1150 Flint Road
Toronto, Ontario
M3J 2J5 Canada
Tel 866.teknion
866.835.6466

IN THE USA:

350 Fellowship Road
Mt Laurel, New Jersey
08054 USA
Tel 877.teknion
877.835.6466

OTHER OFFICES LOCATED IN:

Europe, South and Central America,
Middle East, and Asia
For regional contact information,
visit www.teknion.com

CAN / US / INT 05-24

©Teknion 2024

®, ™ trademarks of Teknion

Corporation and/or its subsidiaries or
licensed to it. Patents may be pending.

